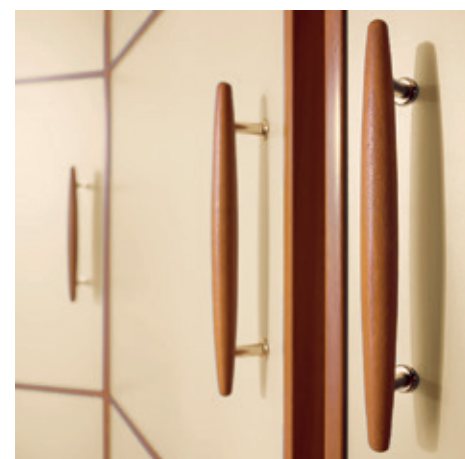
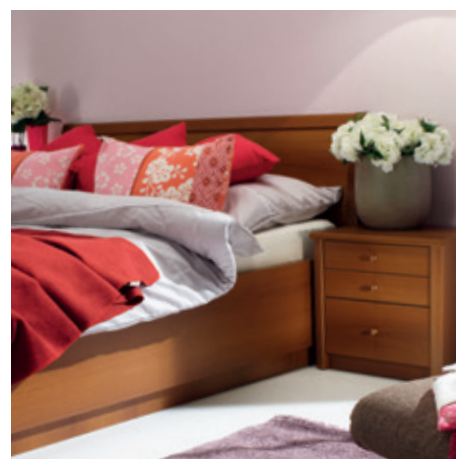






Toplina čudovite barve oreha in lesk svetlih odtenkov za sproščene trenutke življenja. • Toplina prekrasne boje oreha i sjaj svijetle nijanse za opuštene trenutke života. • The warmth of fabulous walnut colour together with the bright beige colour contributes to relaxing moments of life.

1



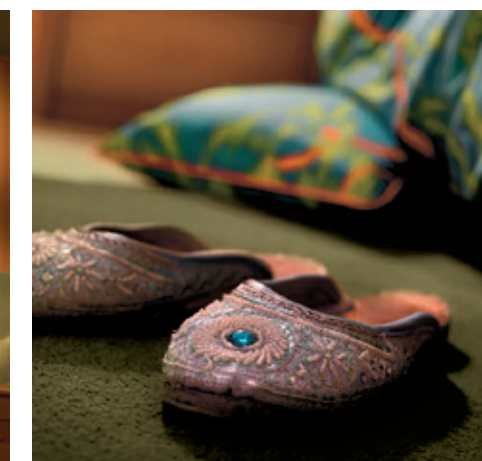
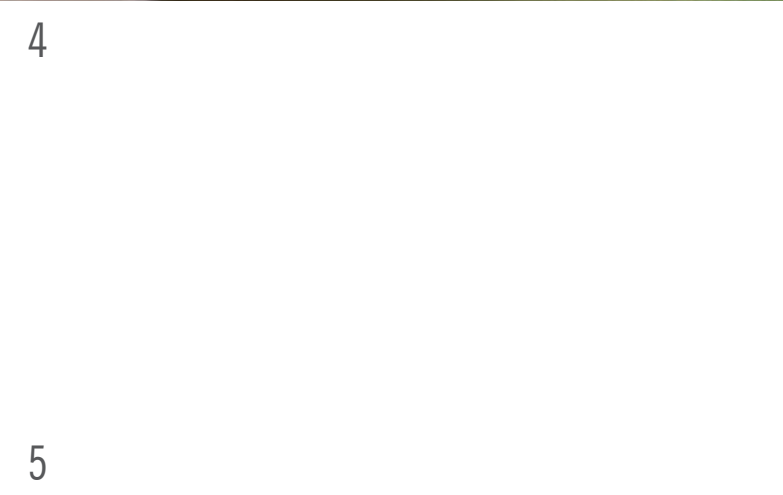
2



3



Postelja za vse okuse, z enostavnim dvižnim sistemom ali elegantno zaobljenimi nogami. • Krevet za svaki ukus, s jednostavnim podiznim sistemom ili elegantno zaobljenim nogama. • Beds for all tastes, with lifting bottoms or elegantly rounded legs.



Postelji brez dna • Kreveti bez dna • Beds without bottom

Možnost spreminjanja višine dna postelje za 7cm • Mogućnost mijenjanja visine dna kreveta za 7cm • Possibility of changing the bottom height for 7cm



Postelja z dvžnim dnom • Krevet s podiznim dnom • Bed with lifting bottom

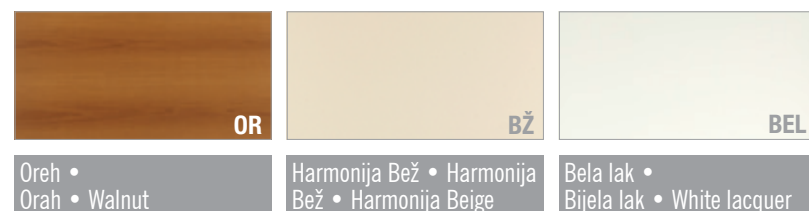


HLEN-90, 120, 160, 180 / 200, 210, 220

HLEK-90, 120, 140, 160, 180 / 200, 210, 220

HLED-120, 140, 160, 180

Barve • Dekori • Decors



Posteljni predal • Ladica kreveta • Bed drawer / Samo za posteljo HLEK • Samo za krevet HLEK • Only for HLEK bed



HLP-160

Talna zaščita • Talna zaščita • Floor protection



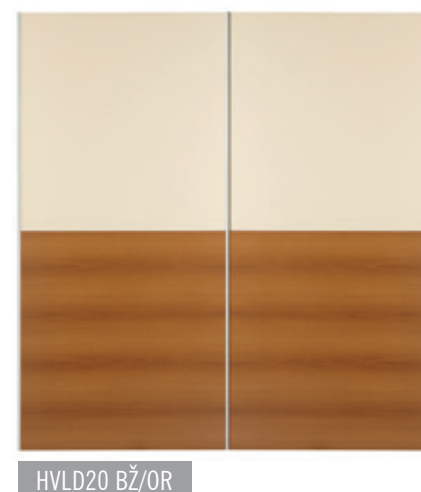
HTZ 120, 140, 160, 180

Klasična vrata • Klasična vrata • Classical door



Globina skupaj s korpusom = 625mm • Dubina s korpusom = 625mm • The depth including frame = 625mm

Drсна vrata • Klizna vrata • Sliding door



Globina skupaj s korpusom = 683mm • Dubina s korpusom = 683mm • The depth including frame = 683mm

Komoda in nočna omarica • Ladičar i nočni ormarič • Chest of drawers and night table

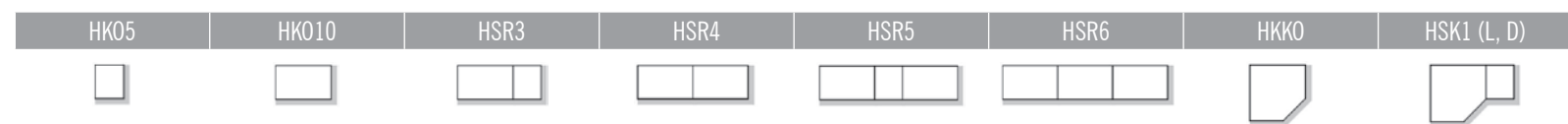


HK

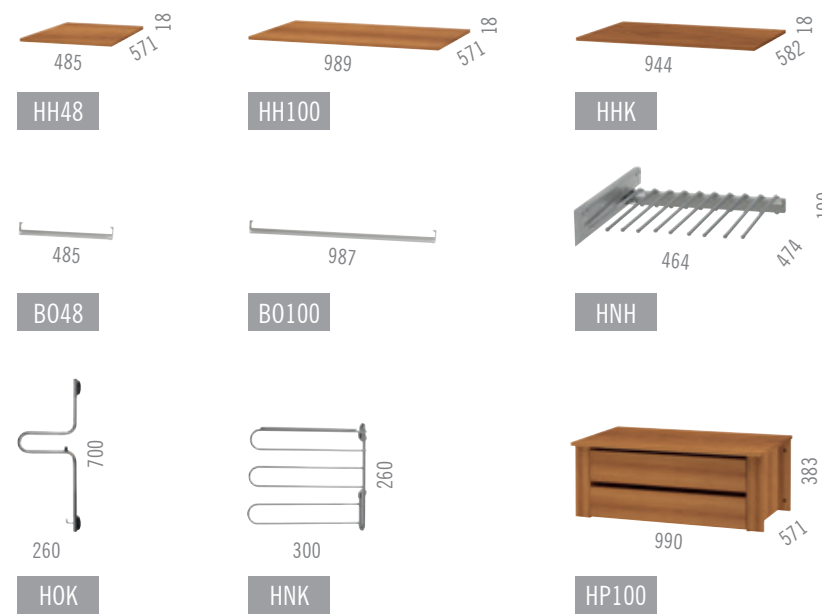
Korpusi garderobnih omar • Korpusi garderobnih ormara • Wardrobe frames



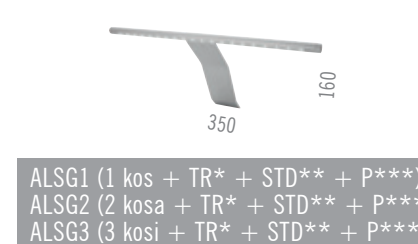
Sestavi brez vrat • Sastavi bez vrata • Wardrobe sets without door



Notranja oprema omar • Unutrašnji elementi ormara • Wardrobe interior elements

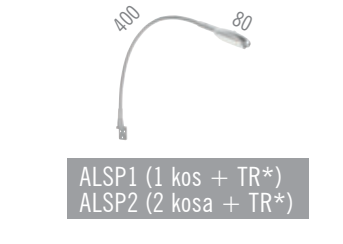


Svetila garderobe (LED, 2 W) • Svjetiljke garderobnog ormara (LED, 2W) • Wardrobe lights (LED, 2W)



ALSG1 (1 kos + TR* + STD** + P***)
ALSG2 (2 kosa + TR* + STD** + P***)
ALSG3 (3 kosi + TR* + STD** + P***)

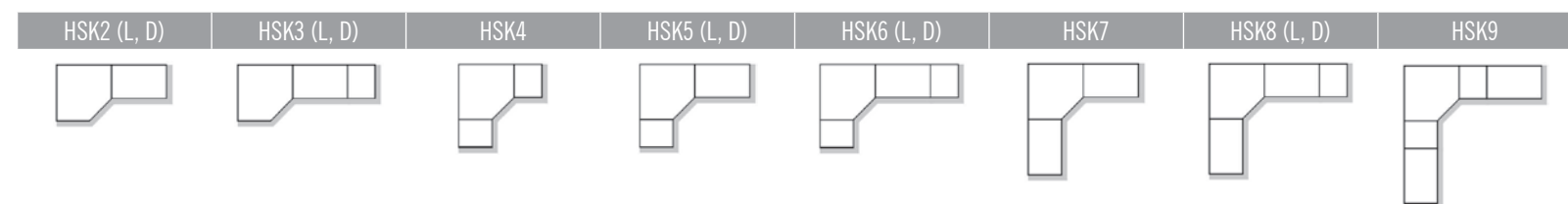
Svetila postelje (LED, 0,85 W) • Svjetiljke kreveta (LED, 0,85 W) • Bed lights (LED, 0,85 W)



ALSP1 (1 kos + TR*)
ALSP2 (2 kosa + TR*)

* Transformator • Transformator • Transformer
** Zatamnitevno stikalo na dotik • Prekidač za prigušivanje, osjetljiv na dodir • Touch dimmer switch
*** Podaljsek • Produžni kabel • Extension cable

Klasična omara • Klasični ormar • Classical wardrobe



Blažilec za drsna vrata • Ublaživač za klizna vrata • Blu motion for sliding door



SFD20B

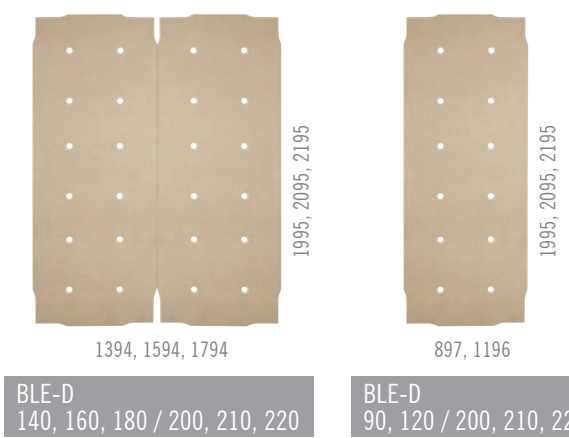
Ogledali • Oglledala • Mirrors



BNOS

HOZ

Dno postelje • Podnica kreveta • Bed bottom



BLE-D
140, 160, 180 / 200, 210, 220

BLE-D
90, 120 / 200, 210, 220

Kotna klasična omara • Kutni klasični ormar • Corner classical wardrobe

